

Novus Drinking Fountain

Fitting and Maintenance Instructions

Gentworks

FIXING

A union should be used in connecting the service pipe to inlet of fountain. This will facilitate removal of fountain for repair if necessary. A control stopcock should be inserted in the service at the nearest convenient point. A draining cock fitted at the lowest point between fountain and control stopcock will enable the fountain to be drained in severe weather.

Before connecting service pipe to fountain it is important to thoroughly flush through.



REGULATING

The fountain valve is regulated to suit 2.8bar (approx.) pressure before leaving works. If it is found necessary to vary this on site proceed as follows:-

Insert a small screwdriver in the jet aperture, regulating screw **(4)** located inside can then be adjusted.

When adjusting jet start with the control stopcock only slightly open, do not open the stopcock further unless adequate jet throw cannot be obtained by means of regulating screw **(4)**. Opening stopcock fully and reducing jet throw by means of screw **(4)** will put excessive pressure on packing of spring valve.

PIPE HAMMER

If this occurs the supply pipe must be disconnected from fountain and regulating screw **(21)** should then be screwed right home to seating and then turned back approx. one quarter of turn.

MAINTENANCE

It will be found quicker and easier to disconnect and remove fountain from wall to carry out any repairs to the valve or fittings. To remove the valve from fountain proceed as follows:

Unscrew lock-nut **(29)** as far down pushrod as possible, screw plunger **(27)** down pushrod until it clears toggle housing **(26)**, pushrod **(28)** can then be removed. Remove backnut securing valve in fountain. When re-assembling a clearance of 1/32" must be allowed between top face of plunger **(27)** and bottom face of toggle lever **(24)**, and pushrod **(28)** must be free to rotate, otherwise valve will not close properly.

GENERAL INFORMATION

If the fountain is not drained during severe frost it may be found that the washer **(15)** has spread, this acts as safety valve and prevents damage to valve. This washer must then be renewed.

When fitting replacement parts it is essential that only the correct parts are used.

Please contact us should you require further advice or information on the fixing or maintenance of the fountain.

ABRASIVE CLEANERS SHOULD NOT BE USED

For more details, please contact us:

email: support@gentworks.co.uk

Tel: 0845 202 4535 or 01844 353 210

Gentworks Ltd

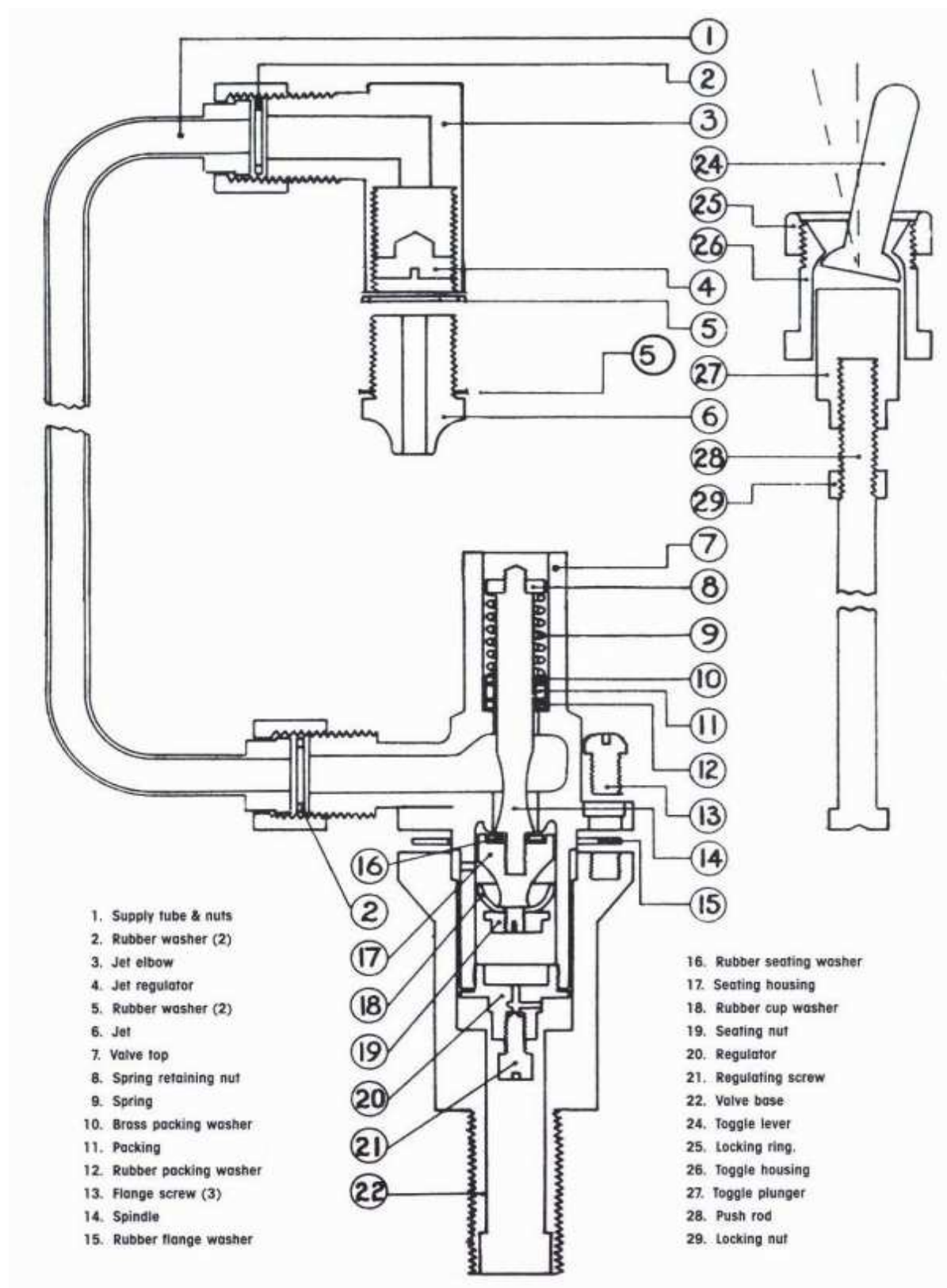
The Barn, Emmington

OX39 4AA, England

Novus Drinking Fountain

Fitting and Maintenance Instructions

Gentworks



For more details, please contact us:

email: support@gentworks.co.uk

Tel: 0845 202 4535 or 01844 353 210

Gentworks Ltd

The Barn, Emmington